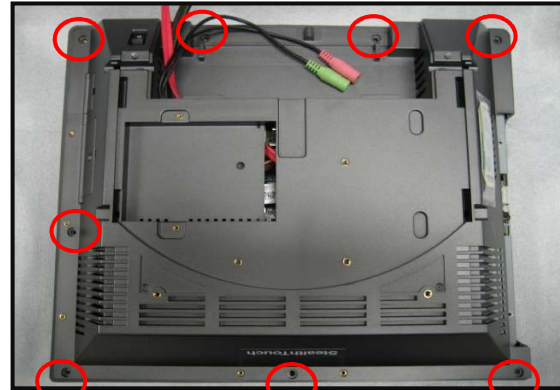


## M5 - Installing Mini PCI Express Wireless Card



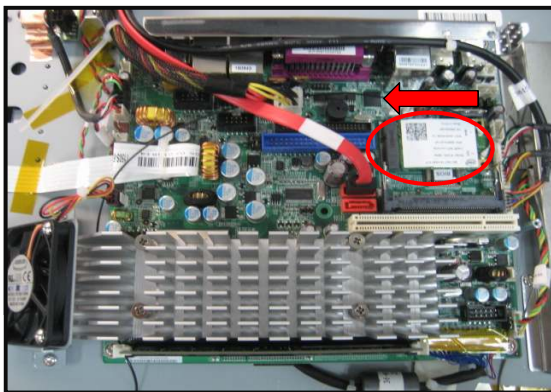
1. First unplug power cable from system. Then remove the system from the base by unscrew two screws on the side (see arrow). Then pull the system up and forward to remove it from the base stand.

*Note 2: If you system had no base stand, then skip to step 2.*



2. Un-install all screws on backhousing and remove back cover.

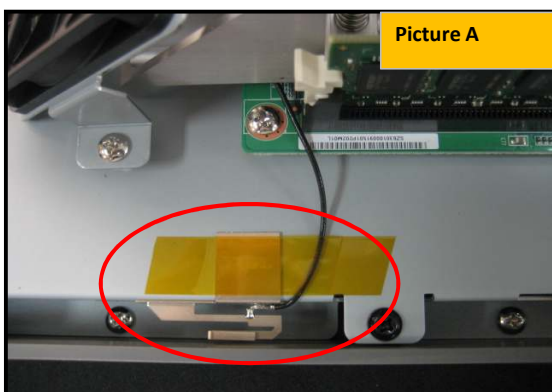
*Note : See red circles*



3. Insert wireless card to mini PCI express port

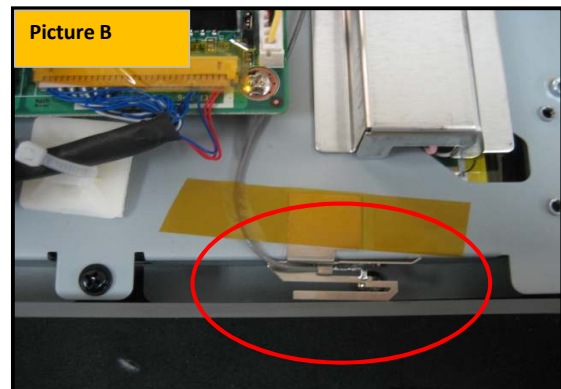


4. Plug antenna cable to wireless card.



5. Tape other end of antenna cable to MB metal.

*Note : See picture A and B*



For further assistance:  
PIONEERPOS INC. Tel#  
909.468.9757  
[support@pioneerpos.com](mailto:support@pioneerpos.com)